

Model No.	External H x W x D (mm)	Internal H x W x D (mm)	Weights	Capacity	In tray /drawer	Shelf
F-H38C/F-H38E	310 x 420 x 355	205 x 315 x 235	38kgs	16 litre	1	-
F-H58C/F-H58E	360 x 490 x 425	236 x 380 x 305	58kgs	28 litre	1	-
F-V58C/F-V58E	500 x 350 x 425	380 x 235 x 305	58kgs	28 litre	1	1
F-V100C/F-V100E	670 x 500 x 470	470 x 360 x 310	105kgs	52 litre	1 (drawer)	1
F-V180C/F-V180E	880 x 590 x 505	666 x 446 x 345	180kgs	102 litre	1 (drawer)	2
F-V380C/F-V380E	1385 x 700 x 630	1145 x 530 x 460	335kgs	280 kgs	1 (drawer)	3

### FEATURES & DESIGN



Mounting Hole



Tongue & Groove



Active Bolt

### FINISHING OPTIONS



Swiss Mocha White Ice

### OPTION FOR LOCK SYSTEM



Key/Combination Lock

This time-tested combination locking device has over a million permutations. The dial features a spy proof cover for extra protection.

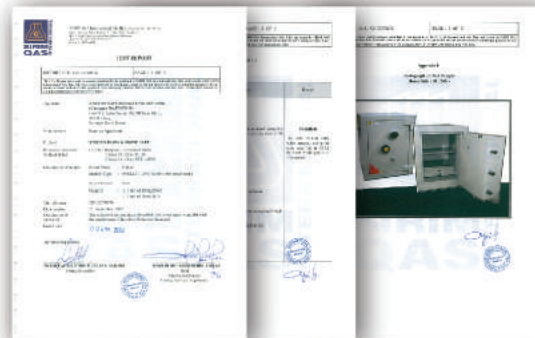


Key/Digital Lock

This is a convenient and easy to use feature. Employing the use of an 8-bit microprocessor chip, the digital lock system is operated by simple touch. Your secret code can consist of 4 to 8 digits. You can program your own access code in seconds. A time delay lock-out is activated if the false number is entered more than 3 times.

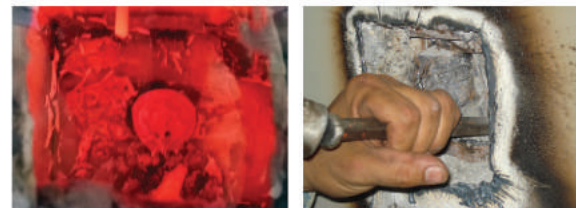
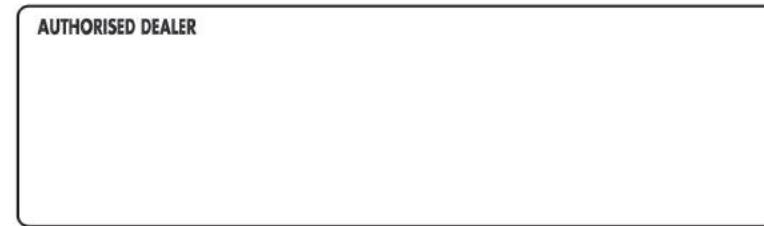


JIS S 1037 : 1989 FIRE RESISTIVE CONTAINERS



ANSI/UL 687 : 1981 and MS 1297:1992 SPECIFICATION FOR FIRE AND BURGLARY RESISTANT OFFICE SAFES.

### AUTHORISED DEALER



# SOLID SAFE



**JIS** Fire tested and certified by JIS Japanese Standard

**CE** CE European Conformity on Digital locks

[www.falconsafe.com](http://www.falconsafe.com)

This Catalogue has been designed for distribution throughout many international markets. Thus, some specifications, comparisons and information set forth herein may not apply in all markets. Falcon's policy is one of continuous improvement, the right to change specifications without prior notice is reserved.



Reg. No: 43Q17689

A sleek modern design of fire resistive and security safe for personal, home and small office use. It provides the best protection of your documents and valuables against threat of unforeseeable fire and burglary attack.



F-H38C



F-H38E



**F-H38**

Net Weight : 38kgs  
 External Dimension : H300 x W420 x D355  
 Internal Dimension : H205 x W315 x D235  
 Locking System : combination(dial) or digital  
 Features : 1 in-tray, mounting hole



F-H58C



F-H58E

**F-H58**

Net Weight : 58kgs  
 External Dimension : H350 x W490 x D425  
 Internal Dimension : H236 x W380 x D305  
 Locking System : combination(dial) or digital  
 Features : 1 in-tray, mounting hole



F-V58C



F-V58E

**F-V58**

Net Weight : 58kgs  
 External Dimension : H490 x W350 x D425  
 Internal Dimension : H380 x W235 x D305  
 Locking System : combination(dial) or digital  
 Features : 1 in-tray, 1 adjustable shelf, mounting hole



F-V100C



F-V100E

**F-V100**

Net Weight : 105kgs  
 External Dimension : H612 x W500 x D470  
 Internal Dimension : H470 x W360 x D310  
 Locking System : combination(dial) or digital  
 Features : 1 lockable drawer, 1 adjustable shelf, mounting hole, caster wheel (optional to remove)



F-V180C



F-V180E

**F-V180**

Net Weight : 180kgs  
 External Dimension : H810 x W590 x D510  
 Internal Dimension : H666 x W446 x D345  
 Locking System : combination(dial) or digital  
 Features : 1 lockable drawer, 2 adjustable shelf, mounting hole, caster wheel (optional to remove)



F-V380C



F-V380E

**F-V380**

Net Weight : 335kgs  
 External Dimension : H1320 x W700 x D630  
 Internal Dimension : H1145 x W530 x D460  
 Locking System : combination(dial) or digital  
 Features : 1 lockable drawer, 3 adjustable shelf, mounting hole, caster wheel (optional to remove)