

WORKSTATION

SERIES

05

SECTION



YH SERIES

SIMPLY AND ELEGANT



TECHNICAL SPECIFICATION

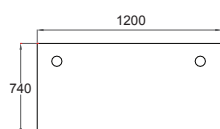
TOP SURFACE : 25mm thk melamine laminated chipboard in Light Grey colour
 TABLE LEG : 18mm thk melamine laminated chipboard in Dark Grey colour
 MODESTY : 18mm thk melamine laminated chipboard in Dark Grey colour
 EDGING : 2mm thk PVC in Dark Grey colour for top surface and leg surface



1. **STANDARD DESK**



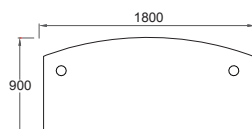
WK-YH1200 1200W x 740D x 760H MM
WK-YH1500 1500W x 740D x 760H MM
WK-YH1800 1800W x 740D x 760H MM



2. **STANDARD CURVE DESK**



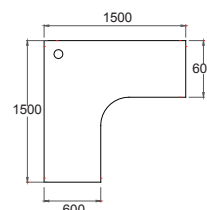
WK-YHC20
 1800W x 900D x 760H MM



3. **ERGONOMIC TABLE**



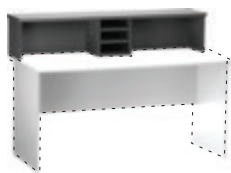
WK-YHERGO
 1500W/600D x 1500L/600D x 760H MM



TABLE

 1. **SIDE TABLE**

WK-YHST 1006
 1000W x 450D x 730H MM

 2. **COUNTERISER**

WK-YHCT 15
 (1500W X 300D X 300H MM)
WK-YHCT 18
 (1800W X 300D X 300H MM)
 COMBINATION TO YH1500 & YH1800

 3. **MEETING TABLE**

WK-YHOC 9118
 1800W x 900D x 760H MM
WK-YHOC 1224
 2400W x 1200D x 760H MM

 4. **CONFERENCE ROUND END**

WK-YHMR
 740W x 1480D x 760H MM
 COMBINATION TO YH1200, YH1500 & YH1800

 5. **ROUND TABLE**

WK-YHRC 9191
 900W x 900D x 760H MM
WK-YHRC 1212
 1200W x 1200D x 760H MM

DRAWER

 1. **MOBILE CABINET**

WK-YHM2D
 425W x 490D x 540H MM

 2. **MOBILE PEDESTAL**

WK-YHM3D
 425W x 490D x 540H MM

 3. **HANGING CABINET**

WK-YHS2DF
 418W x 480D x 480H MM

 4. **HANGING PEDESTAL**

WK-YHS3D
 418W x 480D x 480H MM

LOW CABINET

 1. **SLIDING DOOR CABINET**

WK-YHS808
 800W x 450D x 828H MM

 2. **SWING DOOR CABINET**

WK-YHW808
 800W x 450D x 828H MM

 3. **OPEN SHELF CABINET**

WK-YHO808
 800W x 450D x 828H MM

 4. **12 PIGEON HOLE CABINET**

WK-YH12P
 800W x 450D x 828H MM

 5. **SIDE CABINET**

WK-YHSC202
 1000W x 450D x 730H MM

HIGH CABINET

 1. **HIGH CUPBOARD**

WK-YHCUP
 800W x 450D x 1656H MM

 2. **BOOKCASE WITH DOOR**

WK-YHP55D
 800W x 450D x 1656H MM

 3. **OPEN BOOKCASE**

WK-YHP66
 800W x 450D x 1656H MM

ACCESSORIES (OPTIONAL)

 1. **ROUND END TOP**

WK-YHE3
 900W x 900D x 25THK MM
 EXCLUDING TUBULAR STAND

 2. **SIDE EXTENSION TOP**

WK-YHX33
 1000W x 450D x 25THK MM
 EXCLUDING TUBULAR STAND

 3. **TUBULAR STAND**

WK-TS
 75DIA x 735H MM

 4. **CABINET BASE**

WK-YH BASE
 790W x 436D x 78H MM